



**ACTION PLAN**





## OBJECTIVE

---

The scientific and technical revolutions of the late 20th to 21st centuries has brought humanity to unprecedented achievements in human civilization. These scientific and technical achievements have brought numerous conveniences for humans to enjoy. Therefore, there has been a growing need for energy that has led to higher rates of energy derived from hydrocarbons so fast to the point that the resource is almost depleted, destroying nature, and humanity is facing climate change on a global scale, which in turn has led to increasingly serious diseases and natural disasters

In recent decades, the United Nations has become aware the danger of environmental disaster caused by climate change that all humanity has been facing. In response to that Calling, 196 Countries and Territories immediately joined the Kyoto Protocol, the Paris Agreement and the Euro Standard. Through that the United Nations has been reaching out to all humanity to join hands applied research to find useful solutions in order to restore and protect the environment with an urgent spirit. Recognizing the importance and safety of this Planet, SSE Group Joint Stock Company has successfully researched, created, and applied **a useful solution** that can be applied to all internal combustion engines, reducing CO2 emissions and eliminating harmful CO and NOx emissions. This result meets and exceeds Euro 6 Standards.

This solution has the preminent features that synthesizing energy in the Universe which is available in the Air, without having to change the mold structure of the internal combustion engine. In the process of synthesizing energy from the Air, this technology does not require the installation of any additional batteries as it takes advantage of the diffusion force, dispersal cycle, and electrical signal of the engine. It does not cause any negative impacts on the existing internal combustion engine. SSE (Self-Sustainable Energy) is an **absolutely** safe energy because this energy source is created just sufficiently only what the engine needs, as it calculated by AI (artificial intelligence) technology and generated by the interaction of engine cycles, and diffusion force, according to the principle of **Reconstitution**, due to this energy only appears and participates in the combustion chamber to release energy when the engine runs and disappears when the engine stops.





**SSE is a Self-Sustainable Energy found in the Interaction, Linking, and Listening to the Melodies of the Cosmos.**

**SSE can also be defined as a Self-Sustainable Energy of the Reverted principle caused by absolute interactions that do not add or diminish the total of the Cosmos.**

**Uniqueness; From the smallest particle with dimension other than zero to the largest of infinite quantity that have created miracle abilities of the Universe, everything in this Universe has formed just sufficiently, and just precisely that challenge human intellect. Challenging us to understand fully how everything is connected, interconnected.**

**Therefore, with this knowledge, we should listen to and apply these interactions to create beautiful melodies, forming expected values to satisfy ourselves without leaving any negative impact, based on the principle of Reconstitution by the Uniqueness of the Cosmos.**





# PURPOSE

- The goal of **SSE Group** is how to maintain the existence and stability of all things around us while balancing the energy.
- Interact, Link, and Listen to the Melody of the Cosmos, respecting the principle of Reconstitution.
- Find and provide solutions to adjust the alpha angle, creating an expected value at an optimal point.





# VISION

Mankind on this planet is illuminated by the sun, watching at the moon, breathe in an atmosphere that provides enough energy for all species to exist, develop, and grow. This is a form of information that we have knowledge of, but few of us know the important role of the Universe's latency and the meaning of the Universe's Reconstitution that governs each breath we take

With this as its mission, **SSE Group** scientists have successfully researched and applied useful solutions to protect energy and the environment, without needing to plan or to exploit any input materials, but still meet the needs of human beings, because this energy source is endless

Through the application and sharing of our achievements, **SSE Group** believes that we, humans, have enough knowledge to respect nature, to survive together, and to optimally adapt.





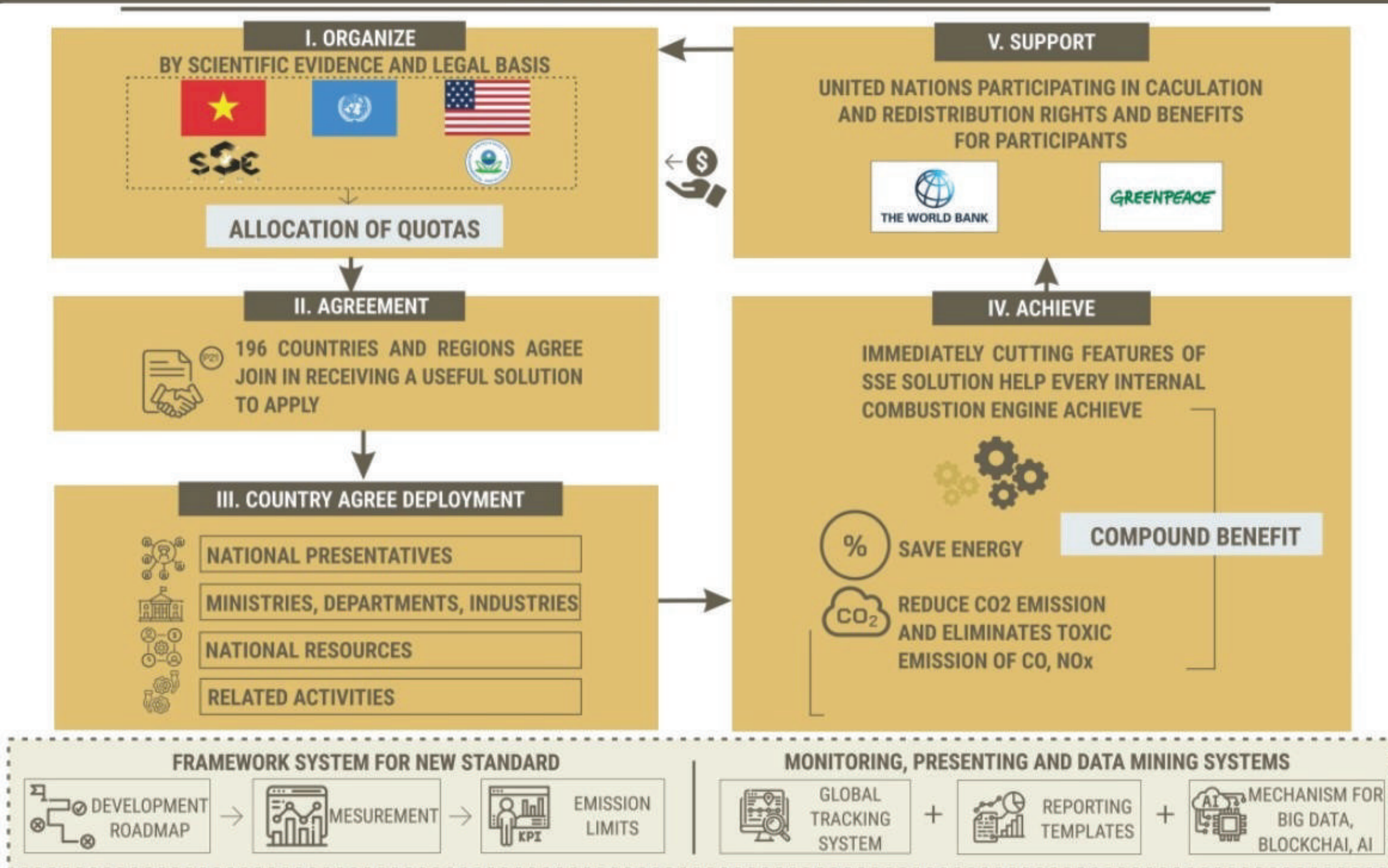
# MISSION

The achievement of SSE Group is to serve humankind, belong to humankind, regardless of race, color, opinion, or religion..., let's join hands and enjoy our achievement together

And let's give back to a beautiful planet of the cosmos, a fresh ecology, a world of peace, of love, and charity



# STRUCTURE CHART ACTION PROGRAM







With scientific evidence and a legal basis, the United Nations convenes 196 Countries and Territories to adopt an Action Plan about applying SSE's useful solution to reduce harmful emissions on a global scale in the spirit of the Kyoto Protocol, the Paris Agreement and the Euro Standards.



## The superiority of SSE

SSE is a Self-Sustainable Energy caused by absolute interactions with the Air condition of the Cosmos, meaning real Air.

Eliminates toxic emissions, surpassing Euro6 standards of harmful exhaust.

Enhances and extends the burning time of traditional fuels, such as gasoline or diesel

Cleans the carbon in the internal combustion engine, stabilizes the burning temperature of engine chamber for optimal performance.

Does not require the installation of additional power supply or batteries

Simple device, fast installation time, low cost



With the ability and responsiveness of SSE in reducing harmful emissions from the internal combustion engine



And based on that, the United Nations will adopt the Action Plan for 196 Countries and Territories to participate in applying this useful solution in a convenient and fast way by:

- Distributing targets based on actual fuel consumption data of each country (total consumption data / year ... / day and emission data calculated by % ... year / ... day).
- This application will be followed, monitored and evaluated by the United Nations and related organizations via Blockchain, Big Data, IoT traceability, as well as demonstrating transparency, legitimacy and orthodoxy.
- Based on actual data on the collection of environmental protection fees that is calculated directly per unit of traditional fuel (gasoline, oil ...) that the international, national and regional organizations have been and will be collecting on behalf of world environmental protection and restoration foundations.

Based on the above data, the World Bank, Green Peace Organization, Environmental Protection Agency and related financial institutions will participate in calculating and reallocating fund in order to optimize benefits for participants.



# Who emits the most CO<sub>2</sub> ?

Global carbon dioxide ( CO<sub>2</sub> ) emissions were 36.2 billion tonnes in 2017.

## CURRENT STATUS

### 196 COUNTRIES AND REGIONS

### Asia

19 billion tonnes CO<sub>2</sub>  
53% global emissions



### Africa

1.3 billion tonnes CO<sub>2</sub>  
3.7% global emissions

### South America

1.1 billion tonnes CO<sub>2</sub>  
3.2% global emissions

### Oceania

0.5 billion tonnes CO<sub>2</sub>  
1.3% global emissions

Shown are national production-based emissions in 2017. Production-based emissions measure CO<sub>2</sub> produced domestically from fossil fuel combustion and cement, and do not adjust for emissions embedded in trade (i.e. consumption-based).

Figures for the 28 countries in the European Union have been grouped as the 'EU-28' since international targets and negotiations are typically set as a collaborative target between EU countries. Values may not sum to 100% due to rounding.

Licensed under CC-BY by the author Hannah Ritchie.

Data source: Global Carbon Project (GCP).

This is a visualization from OurWorldinData.org, where you find data and research on how the world is changing.





## WITHOUT SSE

# Global greenhouse gas emissions and warming scenarios

- Each pathway comes with uncertainty, marked by the shading from low to high emissions under each scenario.
- Warming refers to the expected global temperature rise by 2100, relative to pre-industrial temperatures.



Annual global greenhouse gas emissions  
in gigatonnes of carbon dioxide-equivalents

150 Gt

100 Gt

50 Gt

Greenhouse gas emissions  
up to the present

0

1990 2000 2010 2020 2030 2040 2050 2060 2070 2080 2090 2100

**No Climate policies**

**4.1 - 4.8 °C**

→ expected emissions in a baseline scenario  
if countries had not implemented climate  
reduction policies.

**Current policies**

**2.8 - 3.2 °C**

→ emissions with current climate policies in  
place result in warming of 2.8 to 3.2 °C by 2100.

**Pledges & targets**

**2.5 - 2.8 °C**

→ emissions if all countries delivered on reduction  
pledges result in warming of 2.5 to 2.8 °C by 2100.

**2°C pathways**

**1.5°C pathways**

Data source: Climate Action Tracker (based on national policies and pledges as of December 2019).

[OurWorldinData.org](https://OurWorldinData.org) - Research and data to make progress against the world's largest problems.

Licensed under CC-BY by the authors Hannah Ritchie & Max Roser.





WITH SSE

# Global greenhouse gas emissions and warming scenarios

- Each pathway comes with uncertainty, marked by the shading from low to high emissions under each scenario.
- Warming refers to the expected global temperature rise by 2100, relative to pre-industrial temperatures.



Annual global greenhouse gas emissions  
in gigatonnes of carbon dioxide-equivalents

150 Gt

100 Gt

50 Gt

Greenhouse gas emissions  
up to the present

0

1990 2000 2010 2020 2030 2040 2050 2060 2070 2080 2090 2100

## No Climate policies

4.1 - 4.8 °C

→ expected emissions in a baseline scenario  
if countries had not implemented climate  
reduction policies.

## Current policies

2.8 - 3.2 °C

→ emissions with current climate policies in  
place result in warming of 2.8 to 3.2 °C by 2100.

## Pledges & targets

2.5 - 2.8 °C

→ emissions if all countries delivered on reduction  
pledges result in warming of 2.5 to 2.8 °C by 2100.

## SSE's Commitment

2.5 - 2.8 °C

→ Global emissions if all countries applied SSE's Action Plan  
on reduction pledge result in warming of 2.5°C to 2.8°C by 2030.

## 2°C pathways

1.5°C pathways

Data source: Climate Action Tracker (based on national policies and pledges as of December 2019).  
[OuWorldinData.org](https://www.ouworldindata.org) - Research and data to make progress against the world's largest problems.

Licensed under CC-BY by the authors Hannah Ritchie & Max Roser.



Our Planet is a combination of both biological and physical systems. When it comes to the global climate, countries and people in the world is fully integrated as one. By presenting a fair, ethical and economically viable solution to climate change, this will be the real intellectual achievement of humanity.



Regarding the socioeconomic efficiency that the SSE solution brings: Simple – Safe – Convenient, high economic efficiency. Exclusivities are eliminated (this achievement belongs to mankind). It is therefore not limited by copying because the end-user benefit values are the same (calculated on traditional energy units). Specifically, this SSE solution does not charge the end-user any additional fees other than the established environmental fee for each traditional unit that most of the internal combustion engines have been, are and will be using, with sources derived from hydrocarbon. Based on the environmental fee set by the organizations, including the United Nations, intended to serve the protective duty and to restore the environment to a healthy state as expected, based on real data, international organizations such as the World Bank, the Green Peace Organization, Environmental Protection Agency and related organizations to coordinate, calculate and adjust the environmental fee for each fuel unit accordingly and to optimize the interests of the parties involved.

The achievement of SSE Group is to serve humankind, belong to humankind, regardless of race, color, opinion, or religion..., let's join hands and enjoy our achievement together.

And let's give back to a beautiful Planet of the Universe, a fresh ecology, a world of peace, of love, and charity.





**22.04.2022**

**CHAIRMAN**

A handwritten signature in black ink, consisting of a series of fluid, connected strokes, positioned above a horizontal line.

**Hang Thi Nguyen**